

<b>LINE:</b>	<b>MEAT GRINDERS</b>
--------------	----------------------

<b>MODEL:</b>	<b>MINI-12-FS</b>
---------------	-------------------

**PICTURE:**



**Very Compact**

**Only 10"W x 20"H x 16"D**

USE	CAPACITY AND DIMENSIONS	
<ul style="list-style-type: none"> <li>* Hunting</li> <li>* Ranch</li> <li>* Restaurants</li> <li>* Food service</li> <li>* Etc.</li> </ul>	<b>MODEL</b>	<b>MINI-12 FS</b>
	*Motor	1/3 HP
	**Grinding capacity (3/8)First Ground	3.1 kg/min/ 6.8 lb/min
	**Grinding capacity (1/8)Second Ground	1.3 kg/min/2.8 lb/min

\*Motor available 110volts/60 Hz, 220 Volts/60 Hz or 220 Volts/50 Hz optional  
\*\* 35° F / 2° C Fresh Meat, lab conditions

<b>BENEFITS</b>
<ul style="list-style-type: none"> <li>• Compact size and reliability</li> <li>• Easy to use</li> <li>• Stainless steel construction</li> <li>• 1/3 HP Motor</li> <li>• Easy to clean</li> </ul>

**LINE:** MEAT GRINDERS

**MODEL:** MINI-12-FS

**BENEFITS**



**MINIMUM MAINTENANCE**

Powerful oil bathed steel gears transmission, with no belts or pulleys to maintain



**HYGIENIC**

High grade stainless steel cabinet and tray, high corrosion resistant and easy to clean allowing a hygienic operation and a professional presentation



**GRINDING SYSTEM WITH NO WASHER TO CHANGE**

It doesn't require to change washer frequently

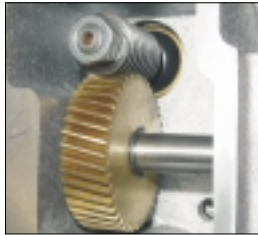
**SPECIFICATIONS**

MODEL	MINI-12 FS
*Motor	1/3 HP
Volts	110/220 volts
**Grinding capacity (3/8)First Ground	3.1 kg/min/ 6.8 lb/min
**Grinding capacity (1/8)Second Ground	1.3 kg/min/2.8 lb/min
Net weight	24 kg/ 53 lb
Shipping weight	26 kg/ 57.3 lb

\*Motor available 110 volts/60 Hz or 220 Volts/50 Hz optional  
 \*\* 35° F / 2° C Fresh Meat, lab conditions

**LONG LASTING LIFE**

The powerful oil bathed steel gears transmission (with no belts or pulleys to maintain) guarantees a long lasting life, with minimum noise and low maintenance cost.



**EASY TO CLEAN**

Its practical grinding system and the feed pan can be completely disassembled in a few minutes without tools reducing time spent on cleaning and maintenance operations.

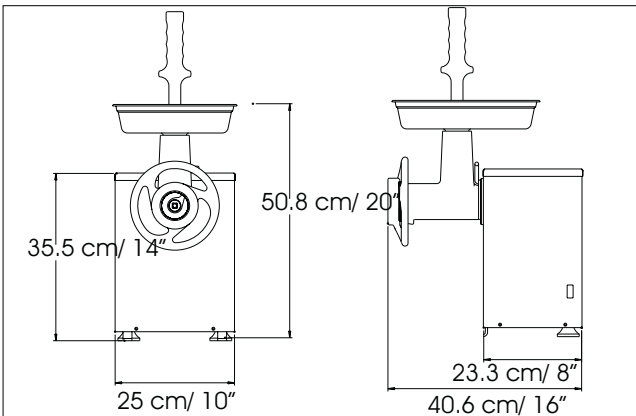
Grinding system components are strong cast iron parts, with dip tin plating for hygiene and corrosion resistance.



Includes Knife, 3/16" plate and stomper



**DIMENSIONS**



**QUALITY SPECS**

**NOM** **ETL** **ETL** **ETL**  
 Safety & Sanitation  
 Conforms UL std 763 Conforms NSF-8 Conforms CAN/CSA STD C22.2

DISTRIBUTED BY