



BONELESS MEAT AND CHEDDAR CHEESE SLICER

Powerful and easy to clean



Slices all types of cheese , including cheddar cheese and boneless meat

**R-300A
MODEL**

- * Powerful gear transmission
- * Integrated knife sharpener
- * Gravity feed
- * 1/3 HP motor
- * Anodized aluminum and stainless steel construction



BONELESS MEAT AND CHEDDAR CHEESE SLICER R-300A MODEL



SAVES TIME AND MONEY

Many parts in this slicer are easily disassembled with no tools, reducing the time spent on cleaning and maintenance cost.



HYGIENIC

Anodized aluminum and stainless steel construction making it hygienic, corrosion resistant, easy to clean, allowing for an Excellent presentation.



LONG LIFE WITH MINIMUM MAINTENANCE

The potent motor and its dependable nylon gear transmission allows the R-300 A fast and precise slices.

Specifications:	
*Motor	1/3 HP/0.25 KW single phase
Volts	115/220 volts
Hz	50/60 Hz
Blade diameter	300 mm / 11.81" IN
Speed blade	380 RPM
Maximum cut width	0 - 25 mm/0 - 1" IN
Maximum sliding table travel	31.75 cm / 12.5" IN
Net weight	38 kg / 83.6 lb
Shipping Weight	51 kg / 112.2 lb

*Optional 220 volts/50 Hz

GRAVITY FEED



45° Slant for true gravity feed allows free fall product feeding

INTEGRATED KNIFE SHARPENER

It is very easy to use and keeps a perfect cutting edge, sharpening and honing the blade through its spinning stones



SAFETY OPERATION

The blade has a metallic cover with a side protector to avoid accidents during cleaning and operation.



SAFETY SWITCH

It also has a lighted switch that indicates when the motor is on, preventing accidents.

CONSISTENCY IN CUTS

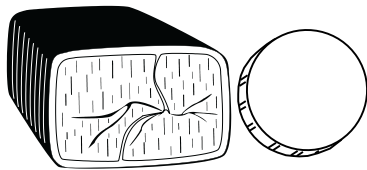
Graduated thickness gauge (0 to 14 mm / 0 to .47") to adjust thickness slices



LONG LASTING BLADE

Highly resistant and long life

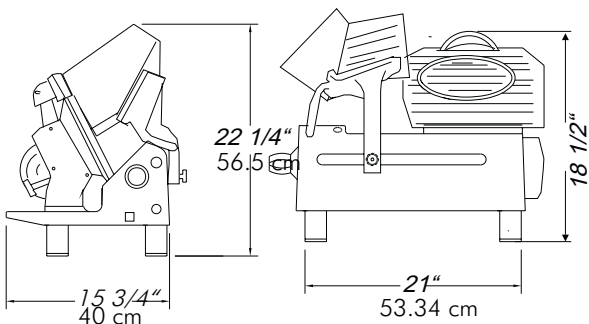
MAXIMUM SLICING SIZE:



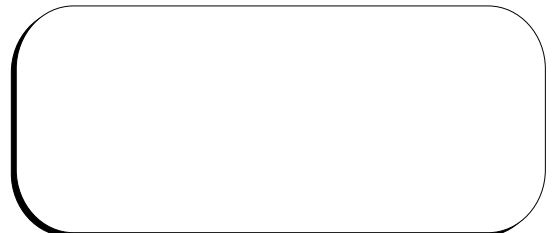
240 x 110 mm
9.4" X 4.3" IN

190 mm ø
7.5" IN ø

DIMENSIONS



DISTRIBUTED BY



ALL INFORMATION IS SUBJECT TO CHANGE WITHOUT NOTICE